



architektonická studie novostavby rodinného domu s garáží

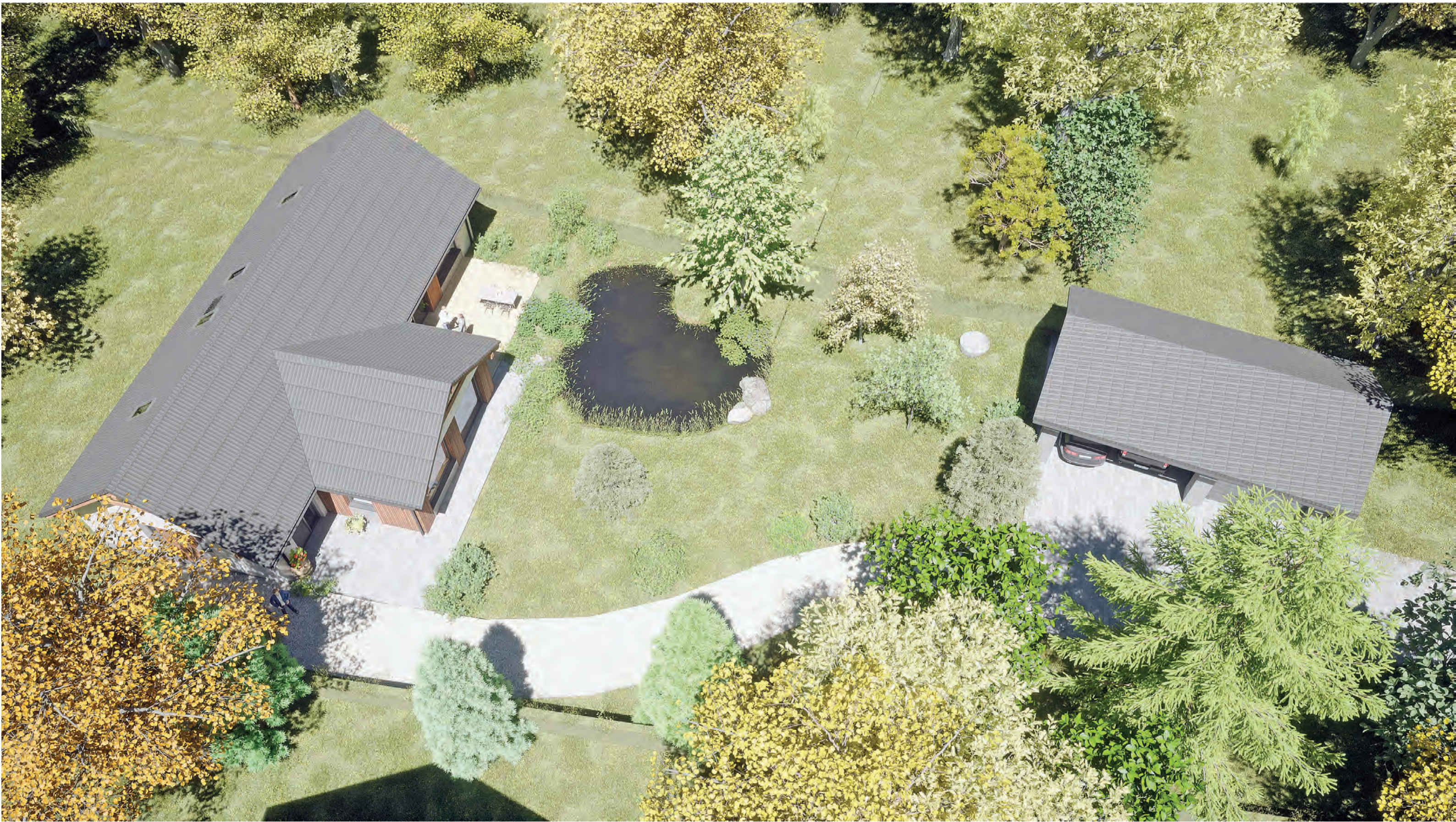
autor návrhu : Ing.arch.MgA. Tomáš Legner

datum : 11 / 2022

**////**  
**LEGNER**  
ARCHITEKT

[www.czechdevelop.cz](http://www.czechdevelop.cz)  
[legner@czechdevelop.cz](mailto:legner@czechdevelop.cz)  
tel. 777 147 252







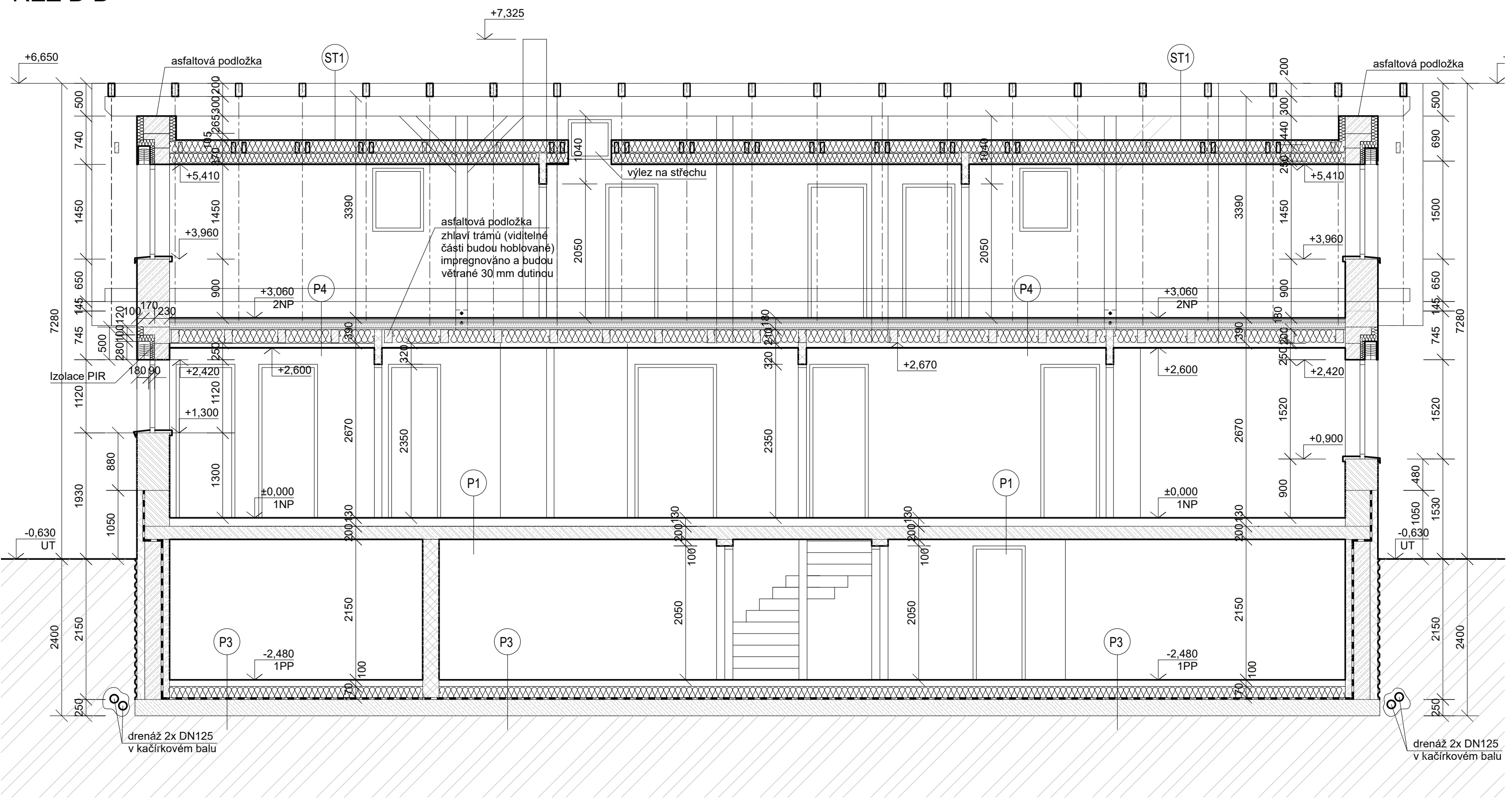


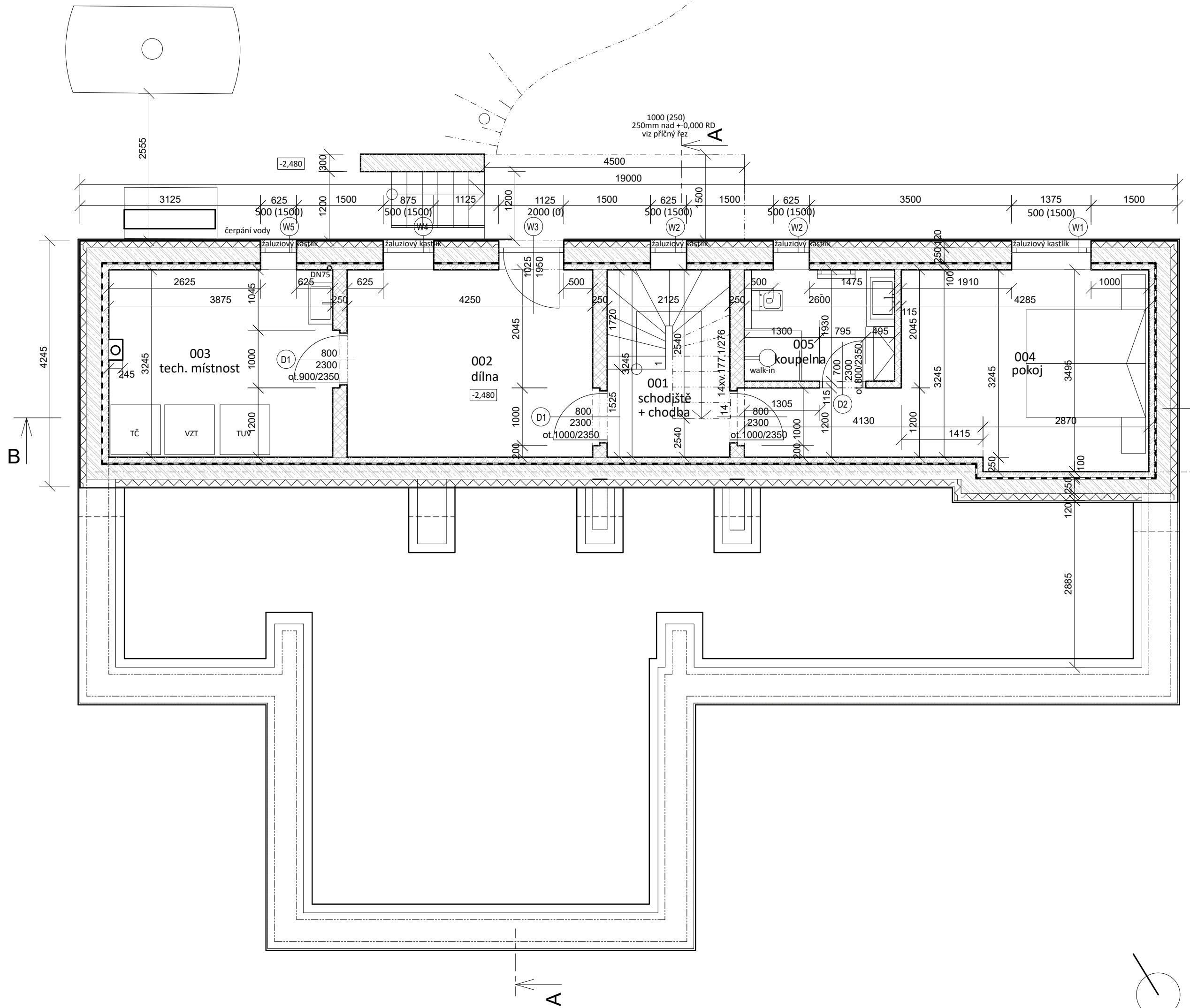






# ŘEZ B-B

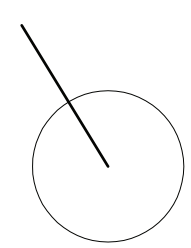
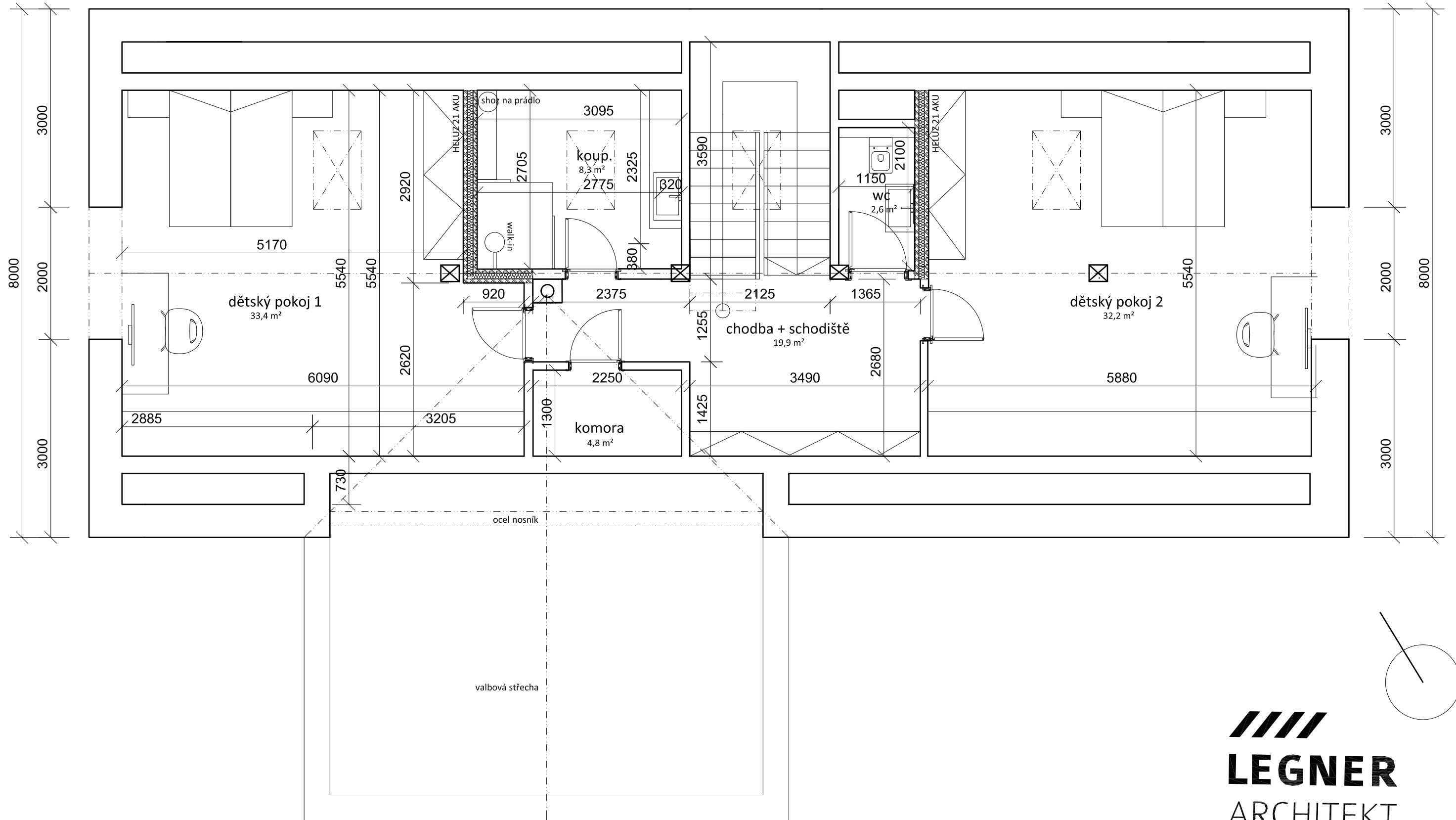




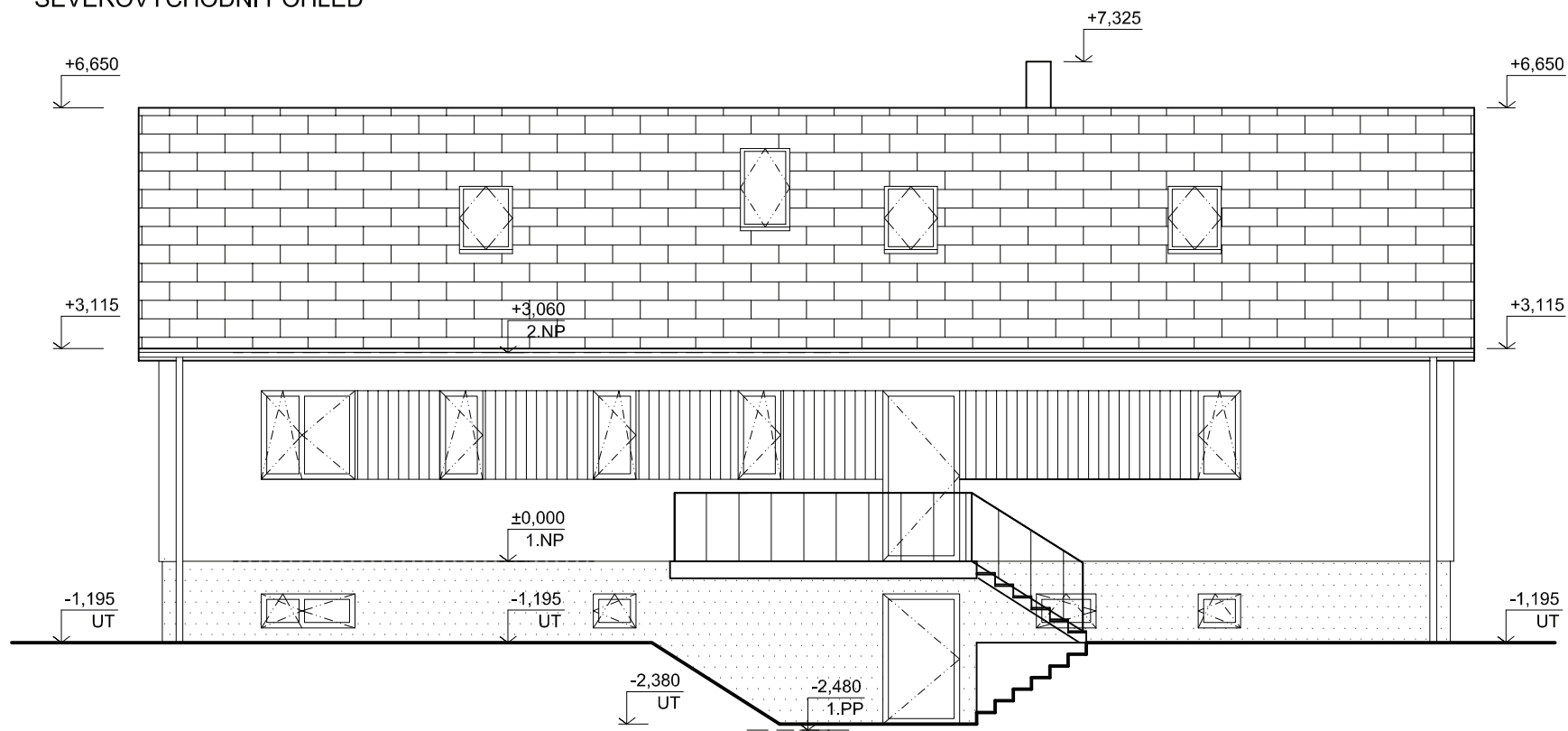




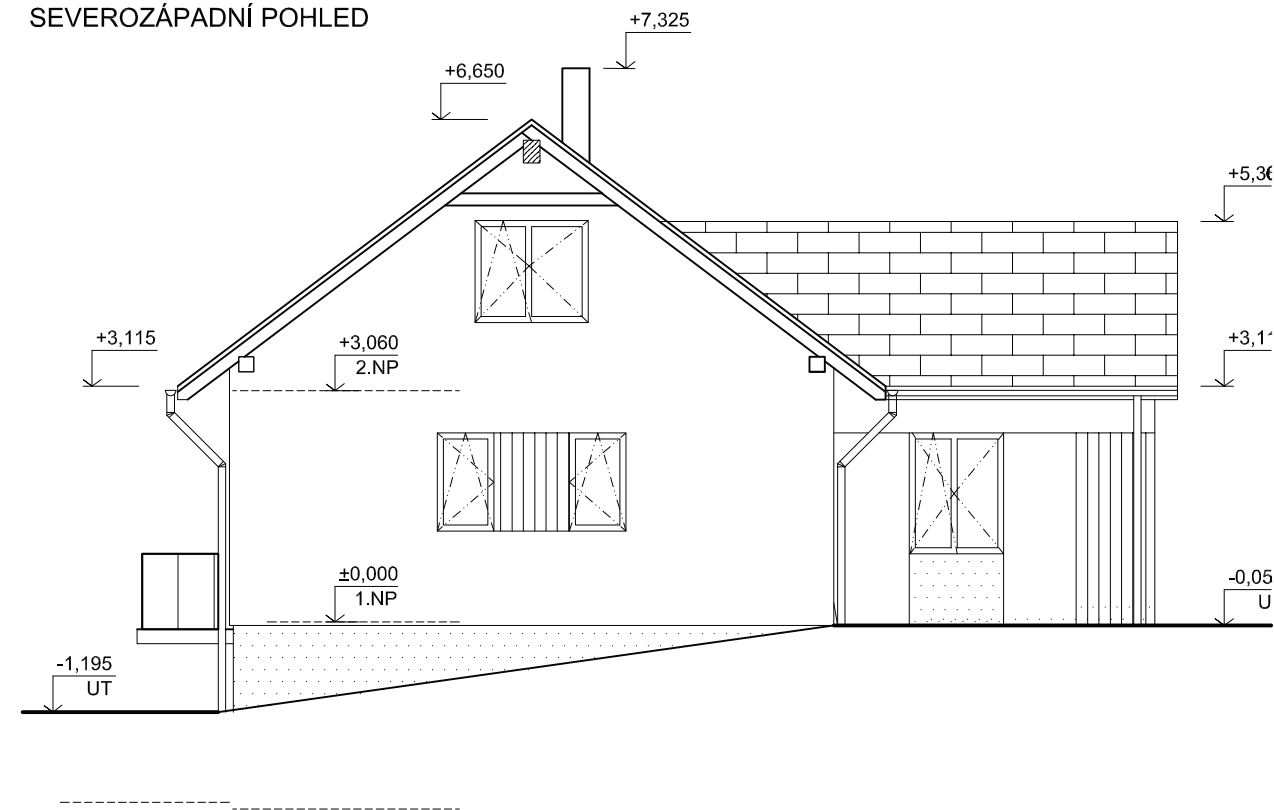
19085



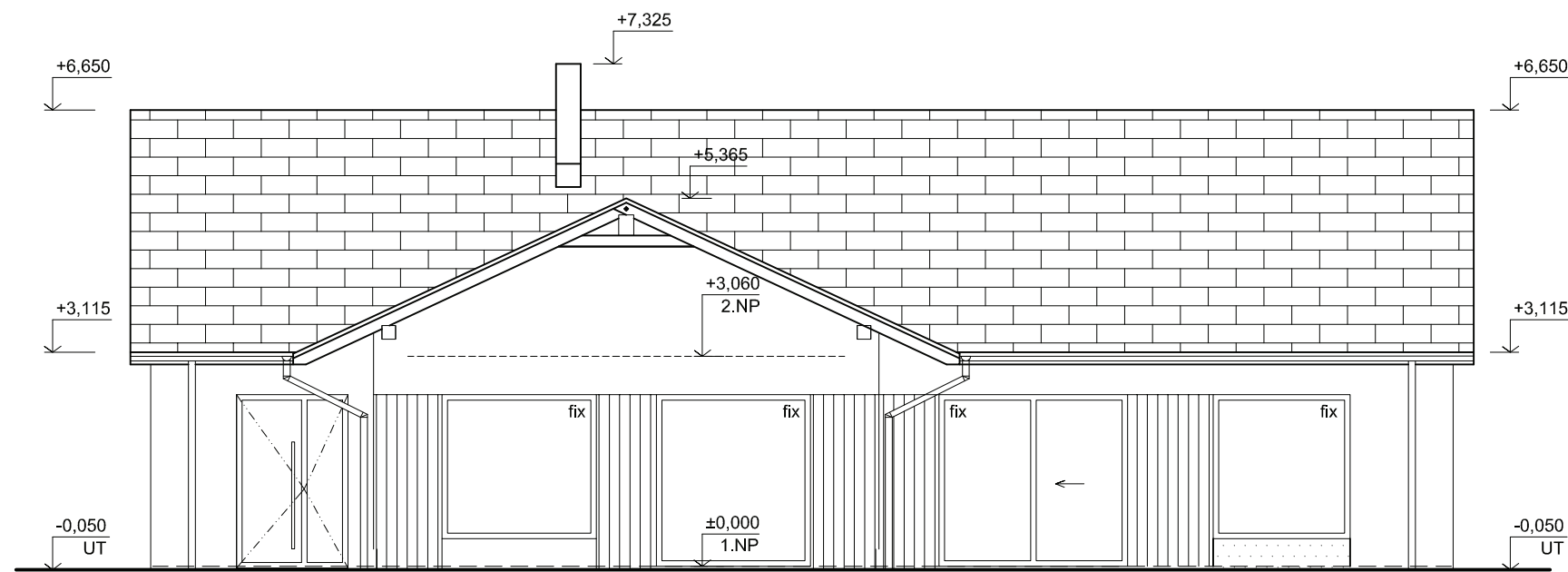
SEVEROVÝCHODNÍ POHLED



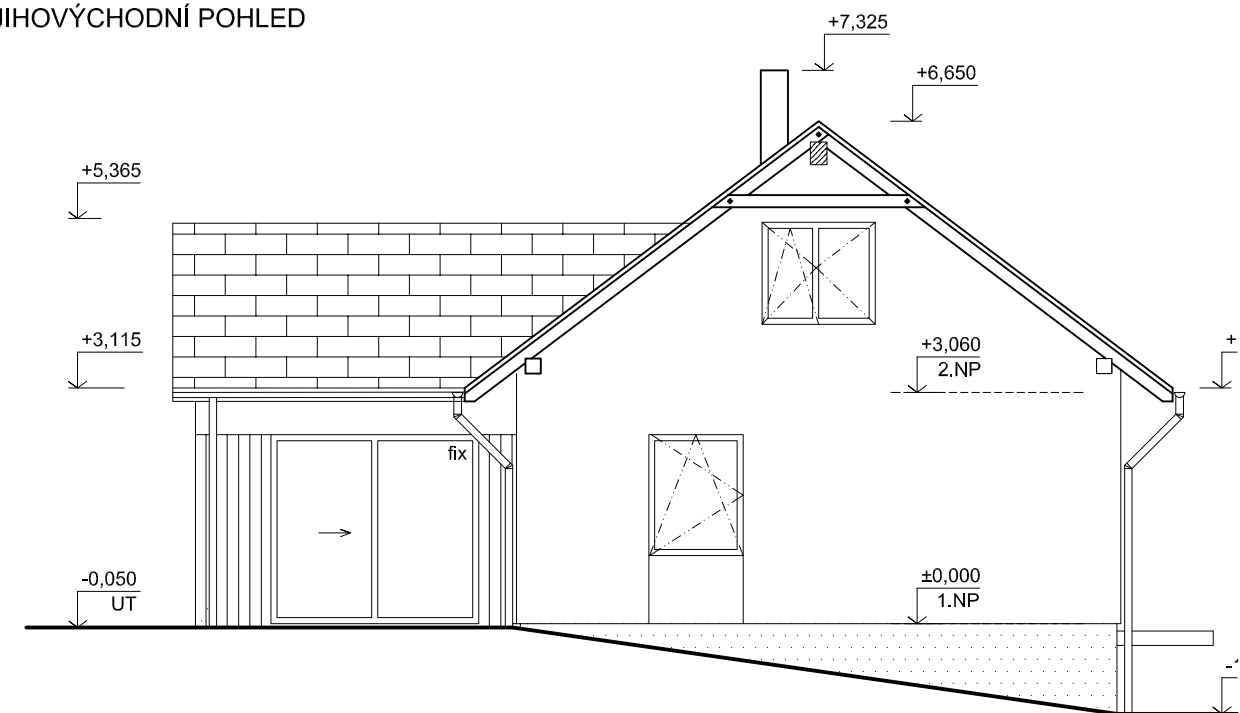
SEVEROZÁPADNÍ POHLED



JIHOZÁPADNÍ POHLED



JIHOVÝCHODNÍ POHLED







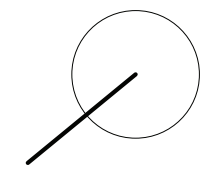
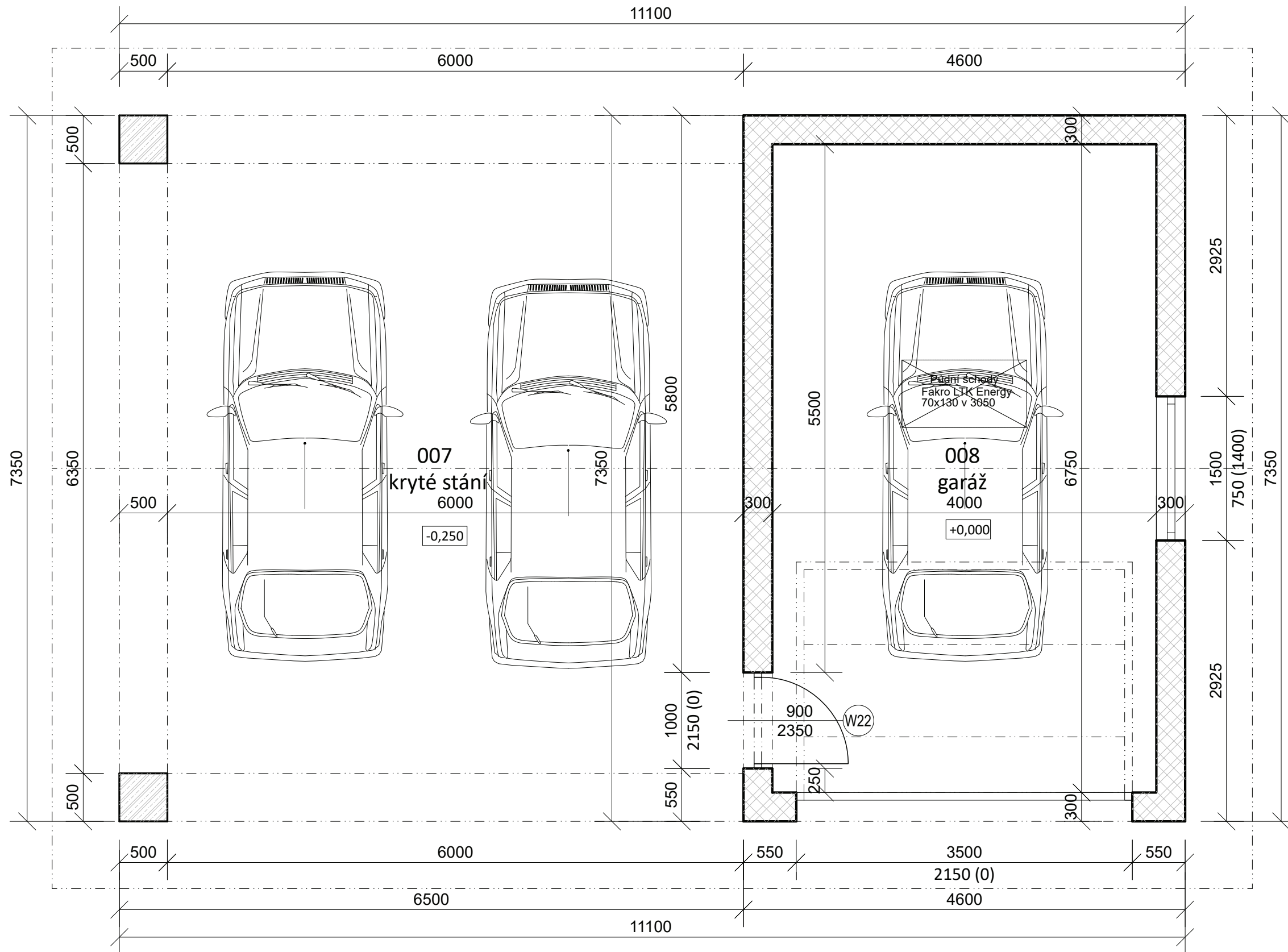




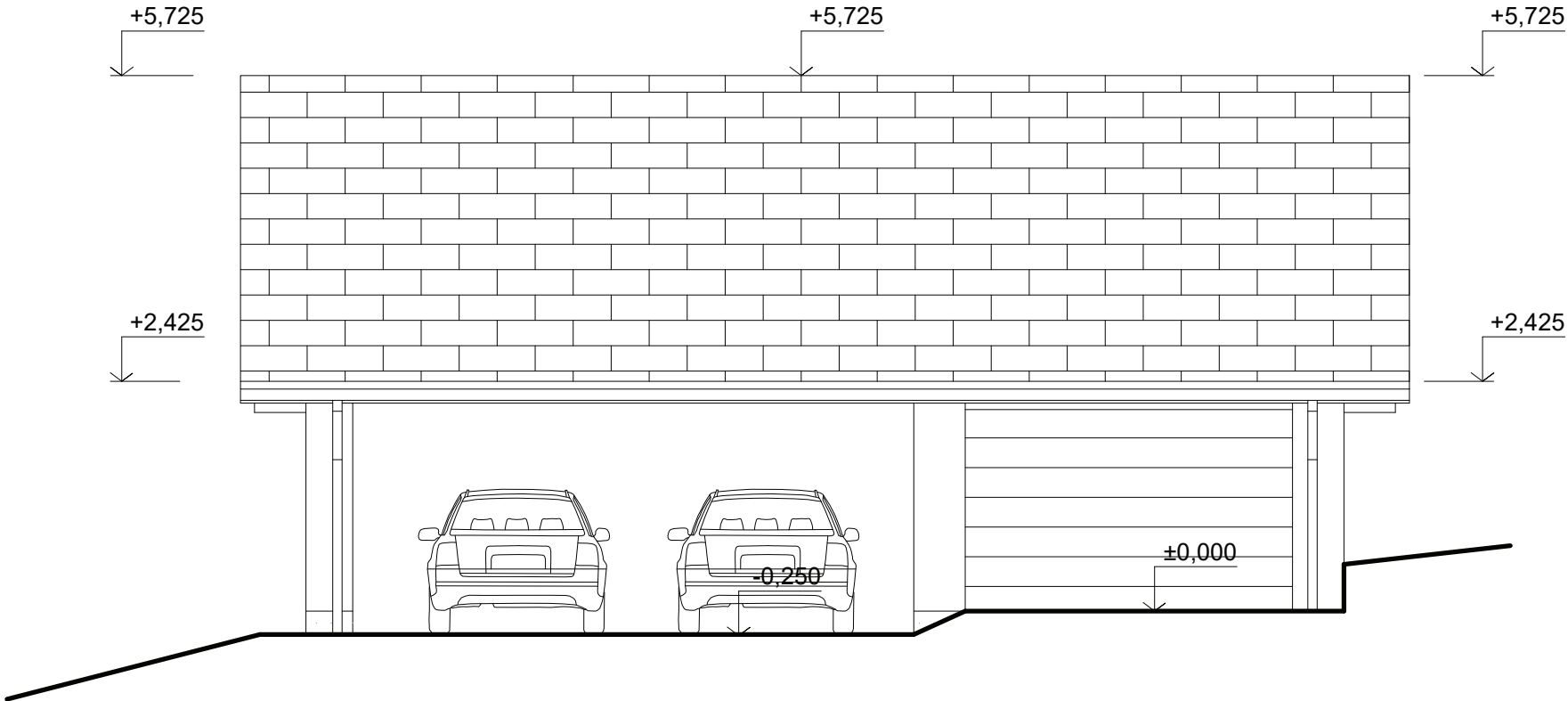




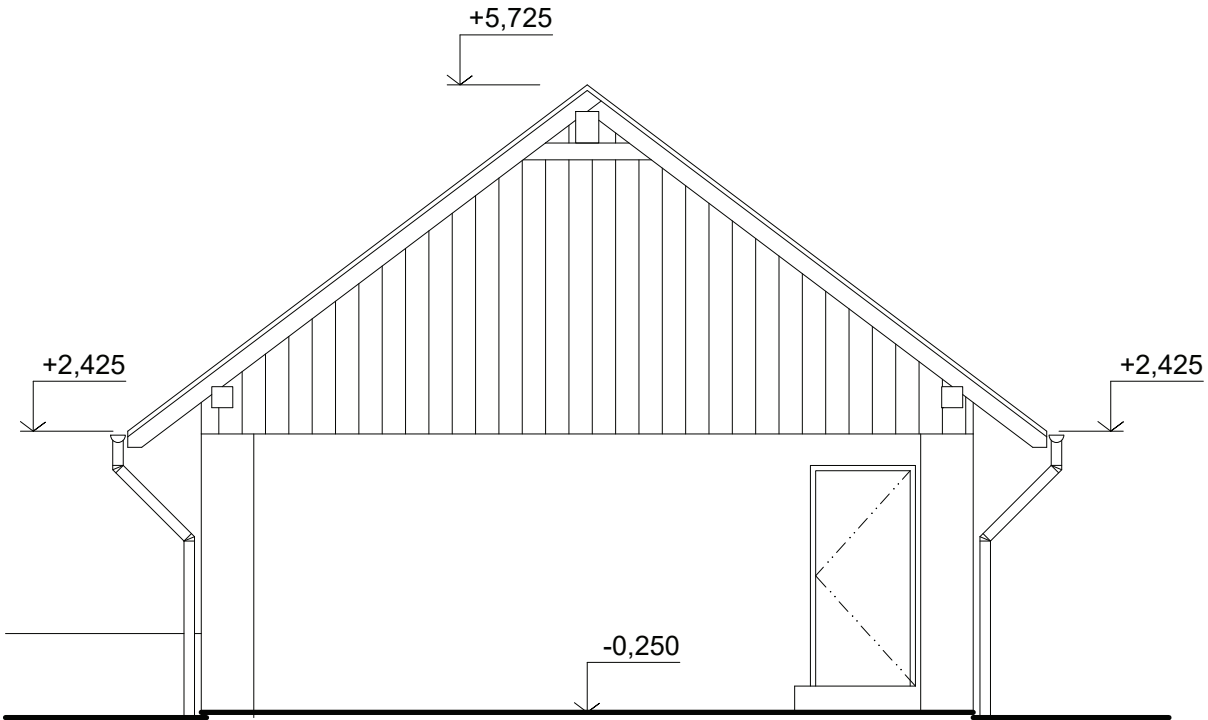




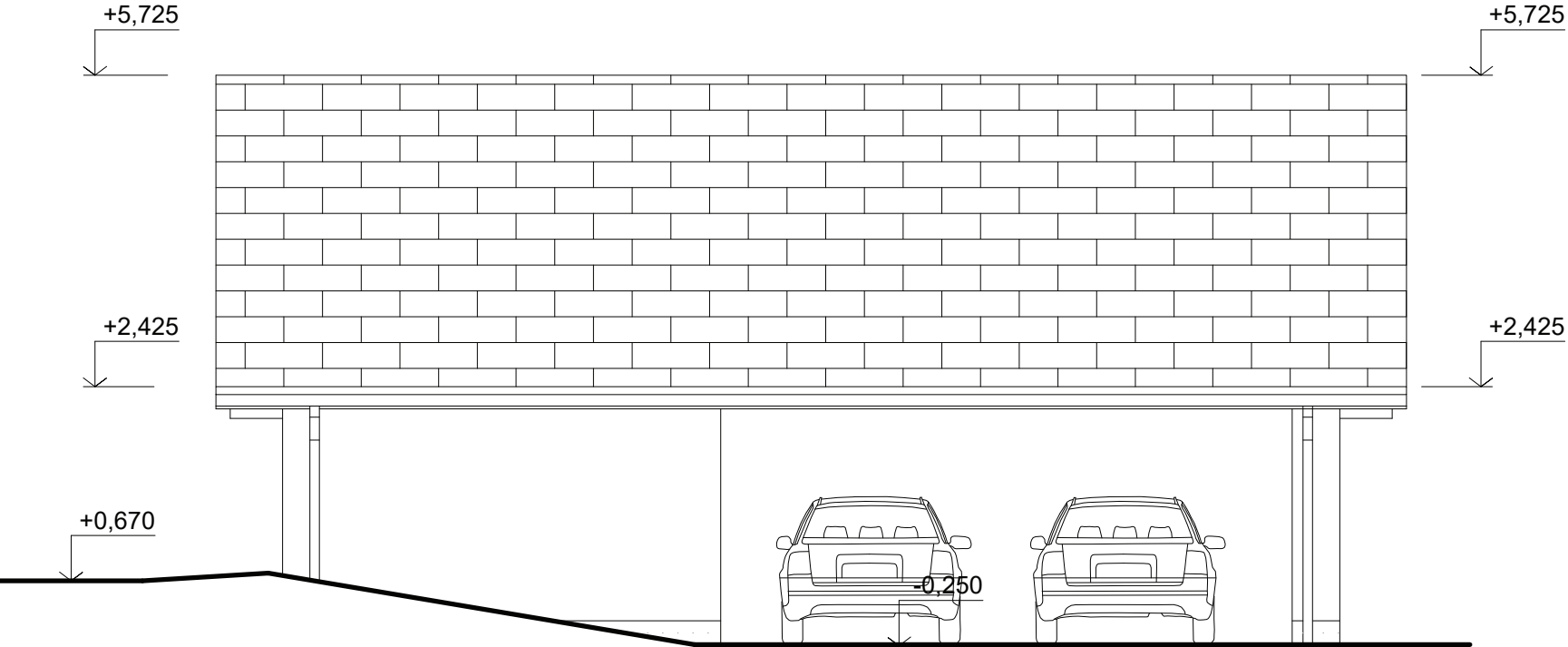
SEVEROZÁPADNÍ POHLED



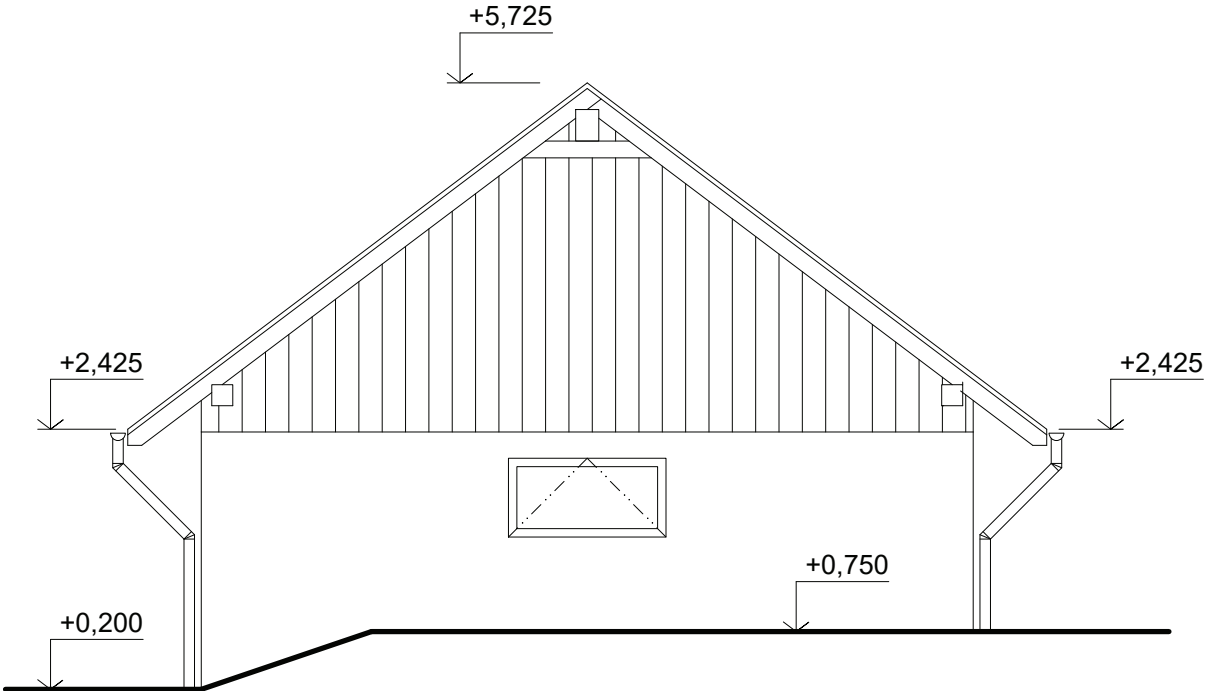
SEVEROVÝCHODNÍ POHLED



JIHOVÝCHODNÍ POHLED



JIHOZÁPADNÍ POHLED



# ŘEZ GARÁŽÍ

